



 **KNOCA**

**Knowledge Network On
Climate Assemblies**

The French Citizens Convention for Climate Governance

Lise Deshautel, former advisor to the co-chair of the governance committee of the CCC & co-founder of KNOCA

The "CCC"
***An outlier amongst
climate assemblies***

Genesis

- **Two social protests** (Yellow vests, Youth climate movement)
- **Great National Debate** (2 million contributions)
- **Announcement** of a citizens' convention on ecological transition



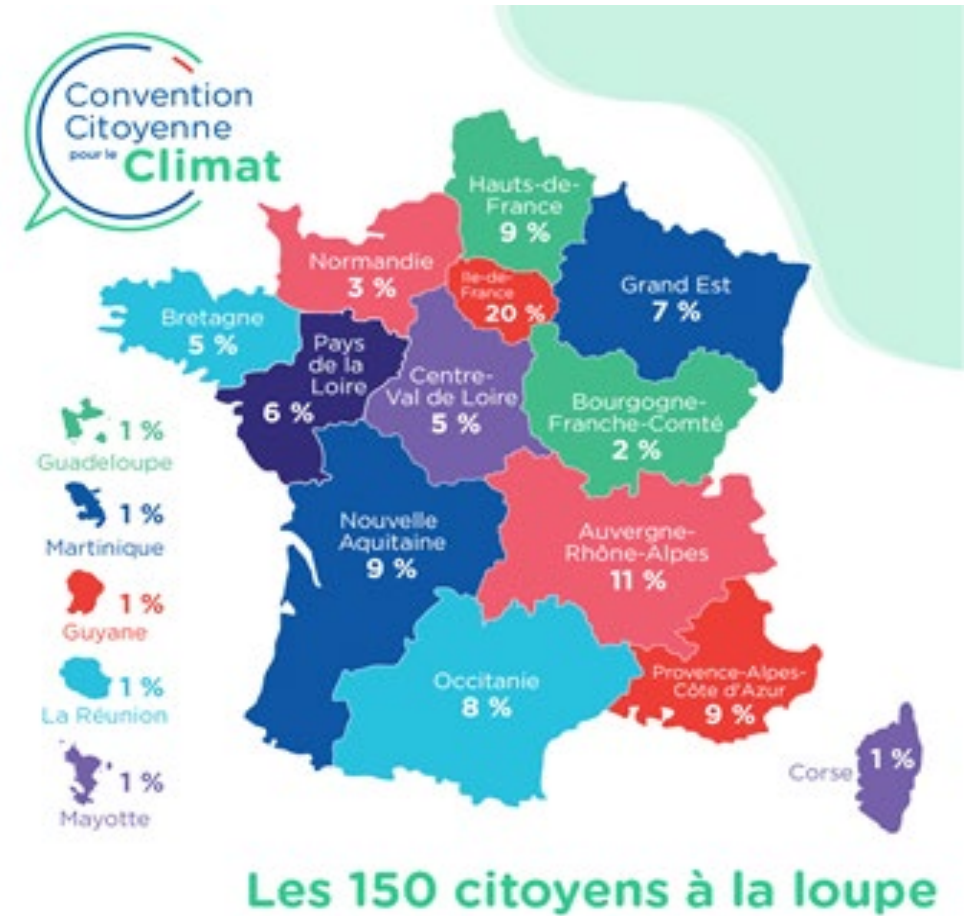
Mandate and structure

Most arrangements defined by a mission letter addressed by the Prime Minister to the President of the Economic, Social and Environmental Committee (ESEC)

- ✓ **Remit** – Design structural proposals for France to cut its GHG emissions by at least 40% by 2030 compared to 1990 in a spirit of social justice
- ✓ **Sessions** – 6 to be organised by January 2020
- ✓ **Composition** – 150 members drawn by lot and to be a “mini-France”
- ✓ **Governance** – A governance committee and 3 guarantors
- ✓ **Support** – ESEC civil servants and resources

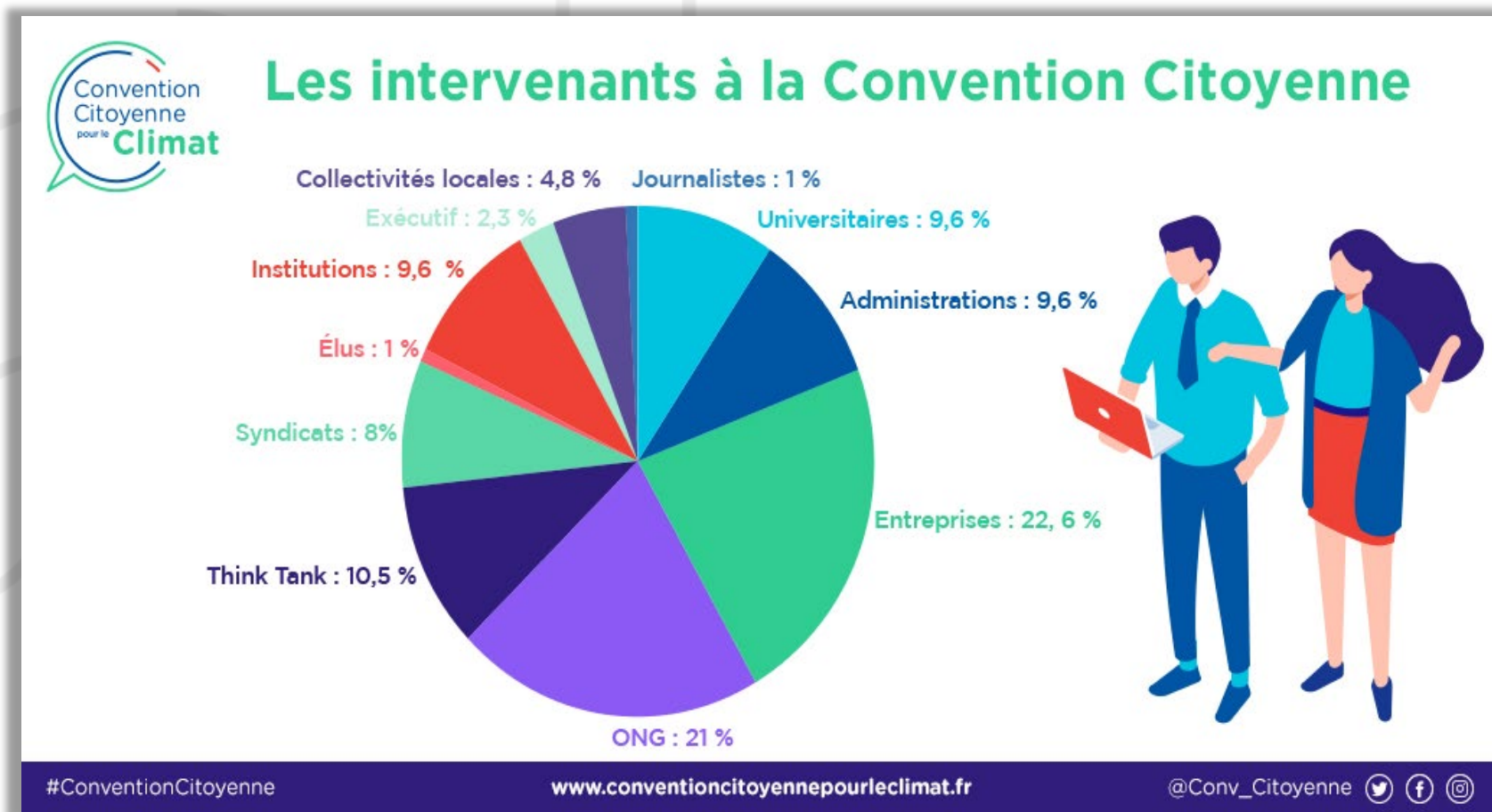
Participants recruitment

- Quota sampling from pool of 300 000 randomly generated phone numbers done by a private company
- Pool of 190 citizens to ensure at least **150 citizens** in each session
- 6 selection criteria used
 - Gender
 - Age
 - Education level
 - Employment
 - Type of territory
 - Geographic origin
- Different approach for participants from oversea regions, with low-incomes and farmers





Evidence base



Information base (gov.co)

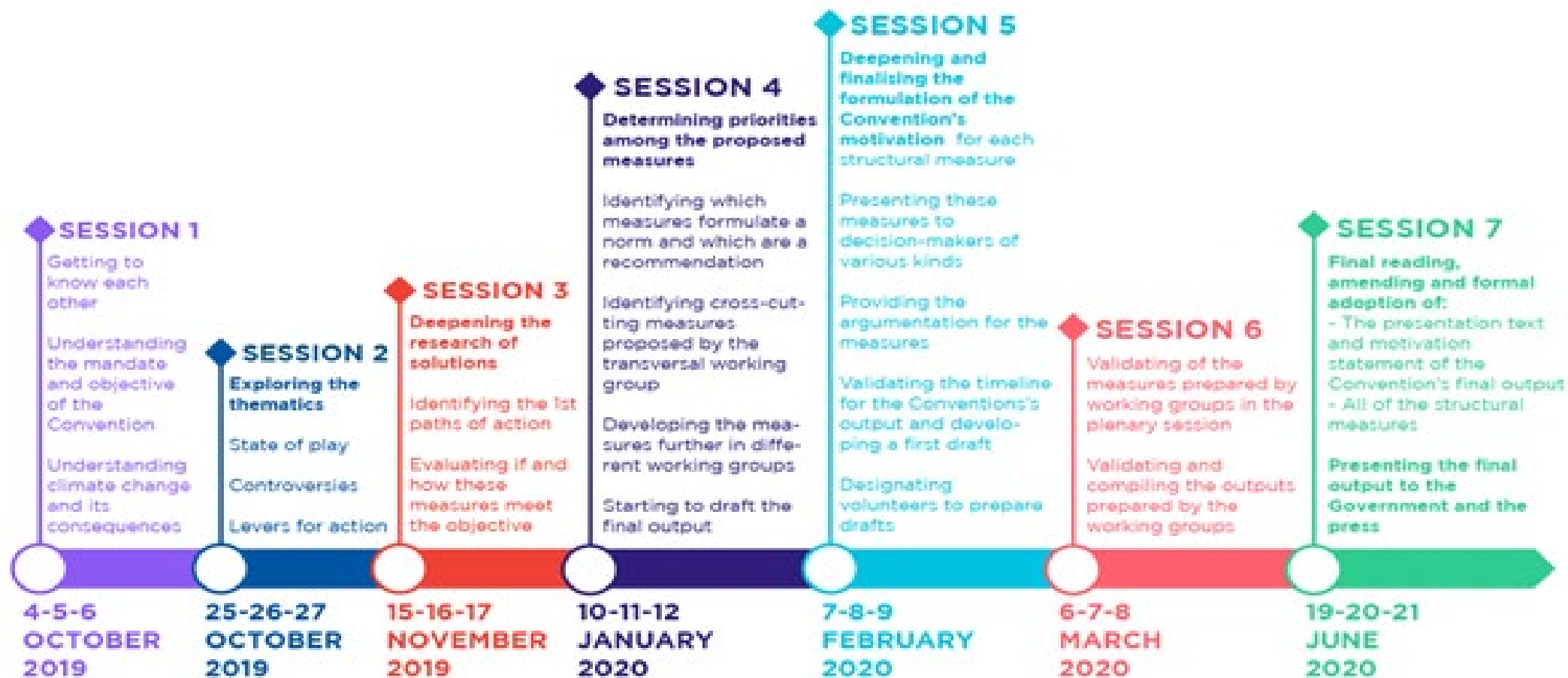
135 external speakers

20 in-house experts (including jurists)

Public platform for contributions

Fact-checking system

Organisation of the works





Outcomes

- Interim communication on the green transition and the covid pandemic
- A final **report** of around **149** proposals
- **Lively climate public debate** over several months



- President's commitment to **translate all but 3 proposals** into law or decrees and use referendum
- Participation of more than half of CCC members to workshops with government and meetings with stakeholders, **review session** and social mobilisation during discussions in Parliament
- **Climate and Relience law**, Senate veto on referendum, translation of some proposals in decrees and regular update of the government's **implementation tracker**

A couple of illustrative numbers

- Climate Action Network France and Le Parisien poll :
 - ✓ 7 out of 10 French people had heard about the Convention's proposals
 - ✓ 3 out of 5 considered that the Convention is legitimate to make recommendations on behalf of the French population
 - ✓ 64% of people who have heard about the Convention considered that its work was useful to fight climate change and lead to an ecological transition in a spirit of social justice.
- Paris School of Economics : French population supports all but one of the Convention's measures
- CEVIPOF: Only 16 % of French people believe that citizens' assemblies have little interest and depreciate parliamentarians work.
7% in Germany, 11% in the UK

Governance

***A major ingredient to an
impactful process***

Governance structure of the CCC

Decision-making

- A **governance committee of 15** representatives of government, think tanks, unions, business and experts in climate science, policy, and democracy (half from the CESE, and 2 non CESE co-chairs)
- Joined by **2 CCC members** (and 2 substitutes) drawn by lot among volunteers and renewed at each session

Oversight

- **3 guarantors** appointed by ESEC and the 2 chambers of Parliament

Facilitation

- Consortium of 3 delivery companies

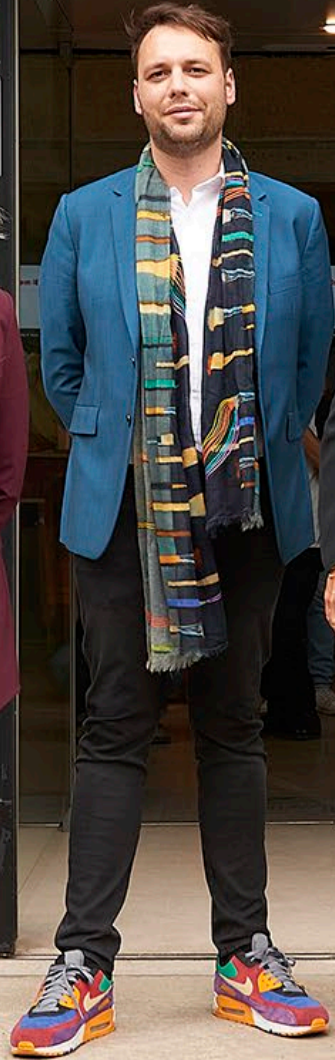
In-house expertise

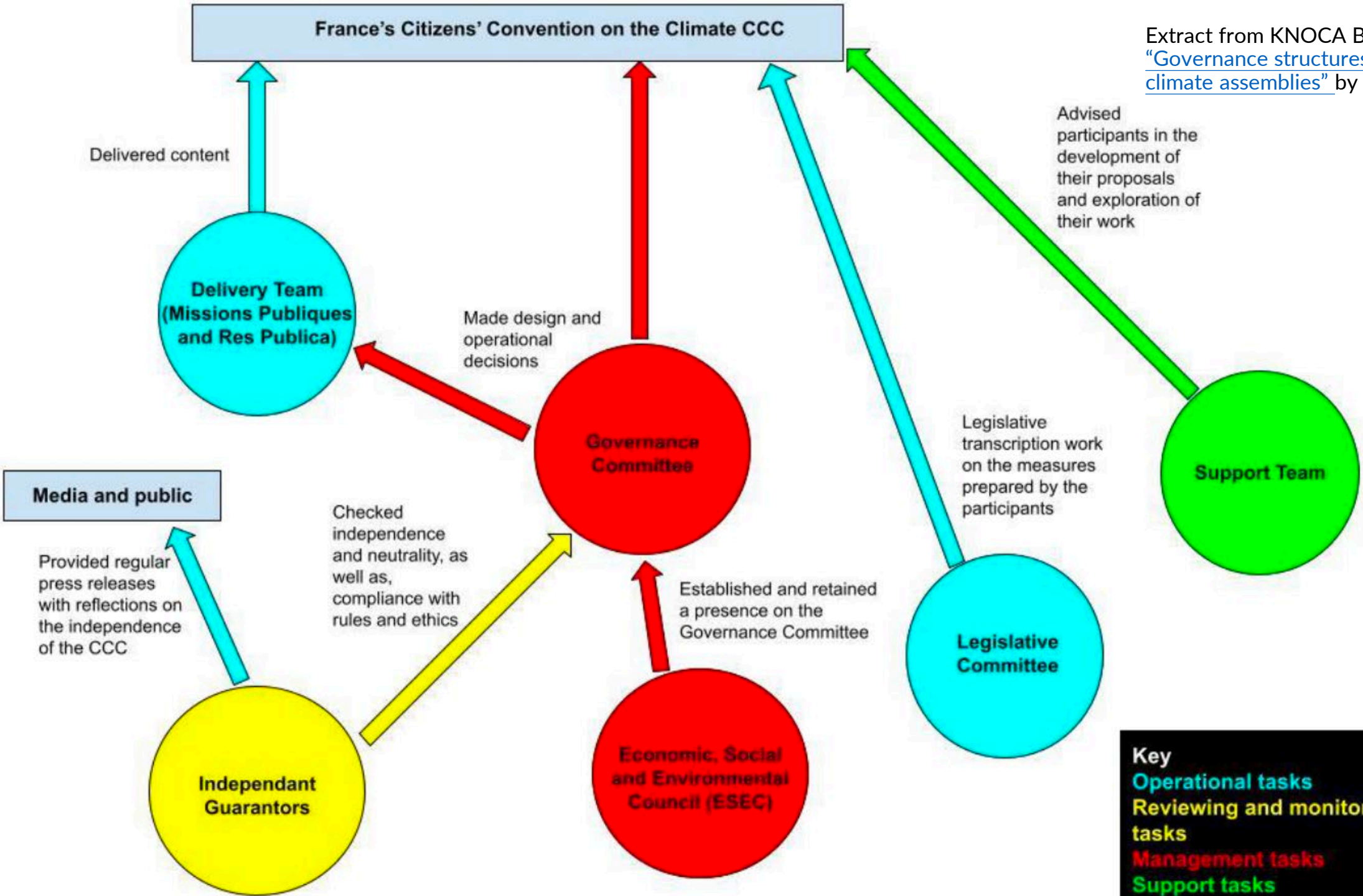
- Expert group (19 members)
- Legislative committee (6 members)

= Result of negotiations

- ✓ Diversity of expertise and connections
- ✓ Semi-transparency and independence
- ✓ Inclusion of user view
- Roles formalised/negotiated along the way
- Decision-making sometimes slowed or even hampered

CONSEIL ECONOMIQUE SOCIAL ET ENVIRONNEMENTAL





Other governance models

- External practitioner or delivery organisation to design and deliver the assembly
- Secretariat comprising civil servants to coordinate the delivery
- Commissioning authority to organize the process with partners



In practice, **variations** within these categories related to control retaining and evolutions during the process.

Key take aways

- ✓ Governance as a **litmus test** of commissioner's true intents and commitment as as ability to mobilise relevant groups of society

Recommendations

- Set up early **robust and independent** governance arrangements
- **Formalise** roles and responsibilities but allow for adjustments
- Reflect a **broad range** of interests and expertise (but not necessarily the organizing body)

Questions to consider

- How the CA will be understood/perceived by members and the wider public ?
- Do your governance arrangements help them understand the process better ?
- What are the various roles needed ?
- Who are the people already “in the room” ?
- Who are the ones you way want to involve and how ?
- ...